



COMO

• RESIDENCES •

The Palm

NAKHEEL



THE VISION

PROJECT LOCATION



SITE LOCATION

- The project's surroundings include the world famous Burj Al Arab, Nakheel Mall, Royal Atlantis and the Atlantis Hotel, Dubai Harbour and the Dubai Marina.
- The plot is located on the north-eastern side of the Palm Jumeirah Trunk.
- The development will benefit from spectacular views. The views to the east will include the Burj Al Arab and the Burj Khalifa.
- In a northwestern direction residents will enjoy spectacular views of the Palm Fronds, framed by the Atlantis Hotel and the Arabian Gulf as a backdrop.
- To the west, the development will enjoy benefits of the Dubai Marina and Ain Dubai.

ROYAL ATLANTIS

BURJ AL ARAB

ATLANTIS

NAKHEEL
MALL

DUBAI HARBOUR

EMIRATES GOLF CLUB

AIN DUBAI

DUBAI MARINA

The background is an abstract, fluid composition of swirling colors. It features a palette of deep blues, teal, and muted purples, with lighter, misty areas that create a sense of depth and movement. The overall effect is ethereal and organic, resembling smoke or liquid in motion.

ARCHITECTURE & DESIGN

NAKHEEL





Dubai's latest 300 m landmark, is the tallest tower on Palm Jumeriah.

Como Residences takes the shape of an organic seashell, rising towards the sky.

This artwork is inspired by the gentle waves of the sea and sinuous curves left in the sand.

SKY POOL -71st Floor
The highest pool on Palm Jumeriah





Bird's Eye View
Every apartment is one
of a kind





THE INTERIORS

NAKHEEL

4-meter height



Level 5 Duplex – Terrace
Residences



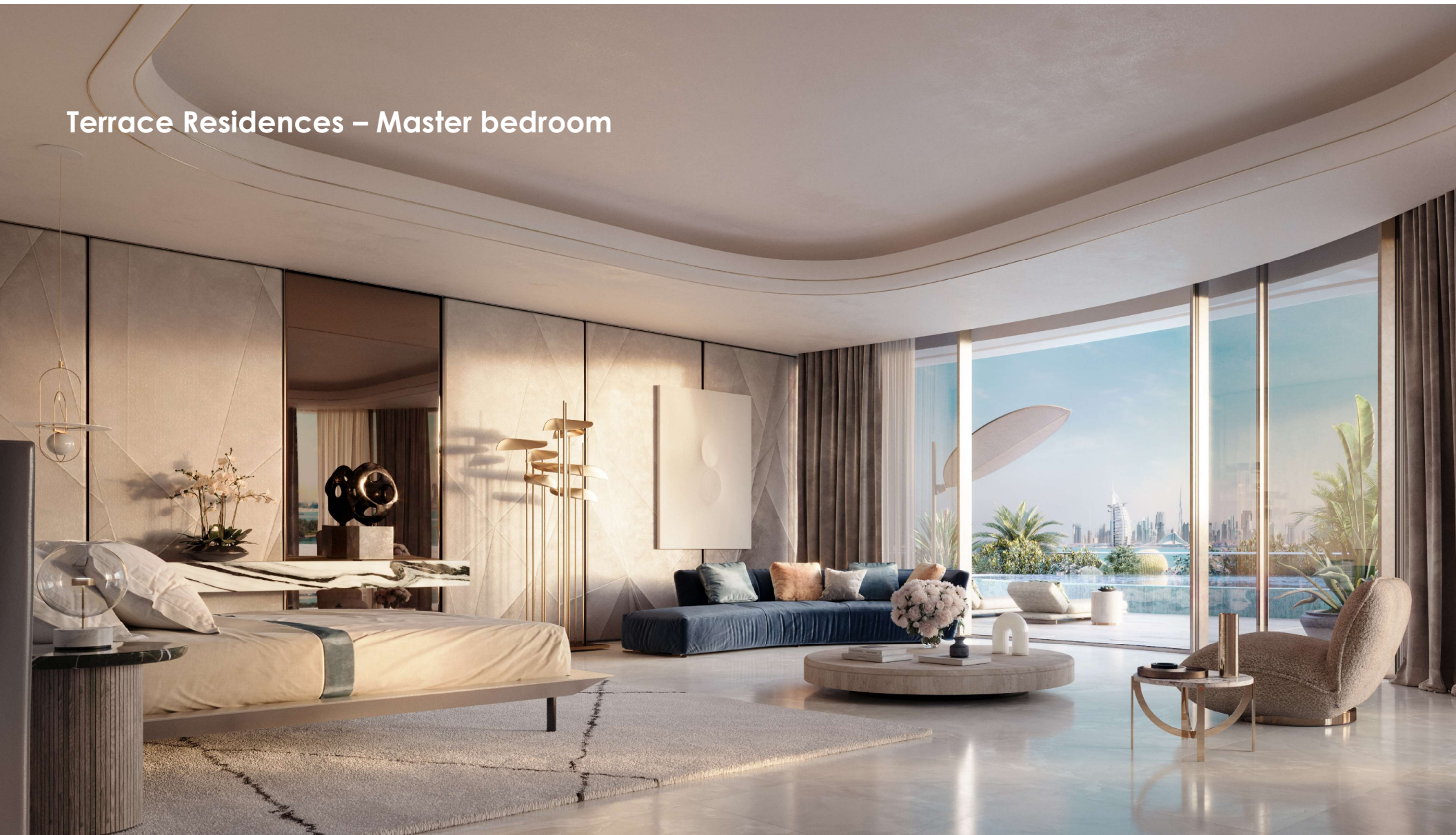
Penthouse – Arriving gallery Living
Room – Level 68



Terrace Residences



Terrace Residences – Master bedroom



Tower Residences – Ensuite bathroom



Terrace Residences





Stunning 360-degree
views of Dubai's
famous Landmarks



Luxury Italian
finishes with
bespoke kitchens,
wardrobes and
branded
appliances





Exclusivity is assured
with a limited 76
Residences

2 - Bedroom
3 - Bedroom
4 - Bedroom
5 - Bedroom
6 - Bedroom
7 - Bedroom

Residences are
located over 69
Floors



AMENITIES

NAKHEEL



Private Sandy Beach Pool



Extensive & Lush
Landscape Areas



Rooftop Infinity
Pool with Stunning
360-degree Views &
Lounge





Paddle Courts,
Squash Courts &
Running Track





Gymnasium, Spa &
Wellness Centre



Children's Wet and Dry Play Areas





Resident's Café Lounge
Located on Level P3



Business Centre
c/w Conferencing
Equipment &
Meeting Rooms





Independent Drivers
Quarters



Generous Parking
Provisions



Concierge
Service



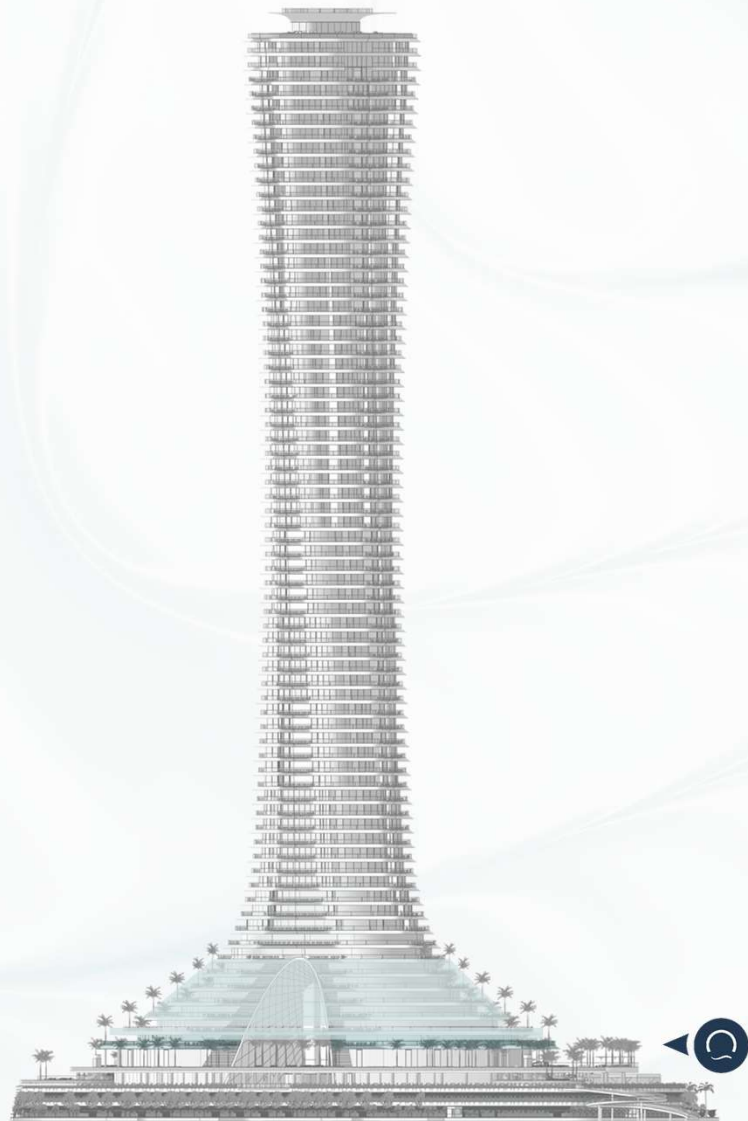
TOWER ZONING

NAKHEEL

COMO

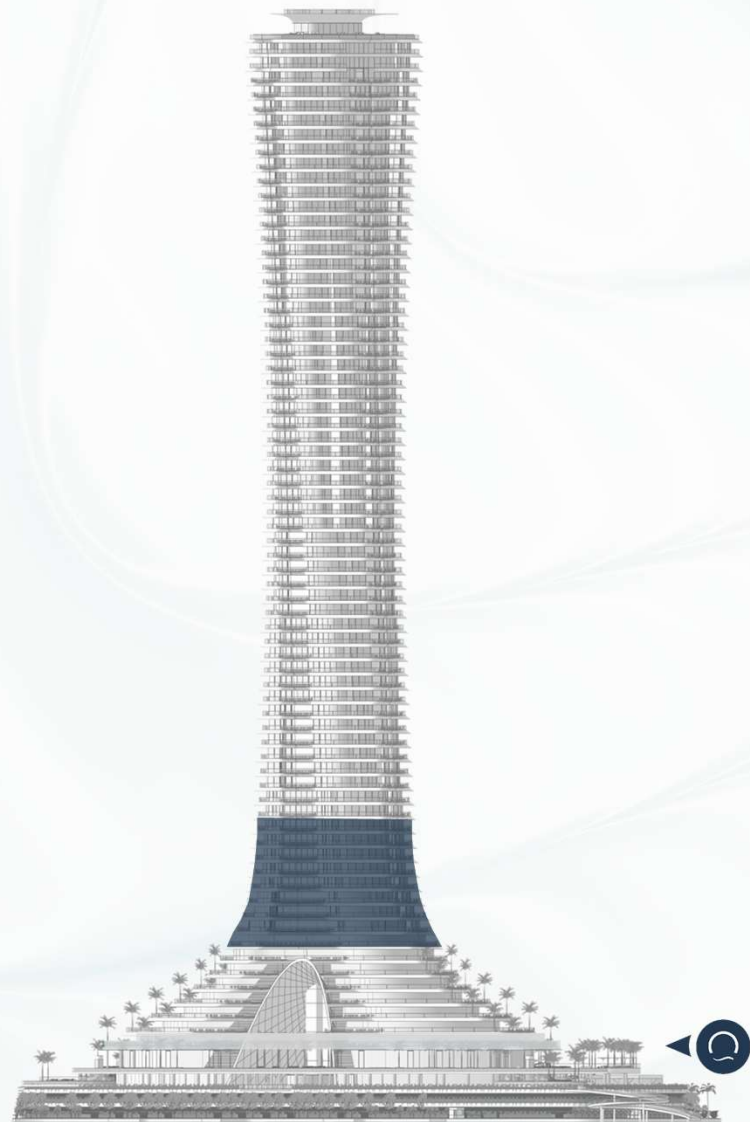
• RESIDENCES •

TERRACE RESIDENCES
LEVELS 1-6
4 – 7 BEDROOMS
SIZE RANGE: 11,400 - 19,600 SQFT



COMO
• RESIDENCES •

TOWER RESIDENCES
LEVELS 9 - 18
2 - 5 BEDROOMS
SIZE RANGE: 4,500 - 7,700 SQFT



COMO

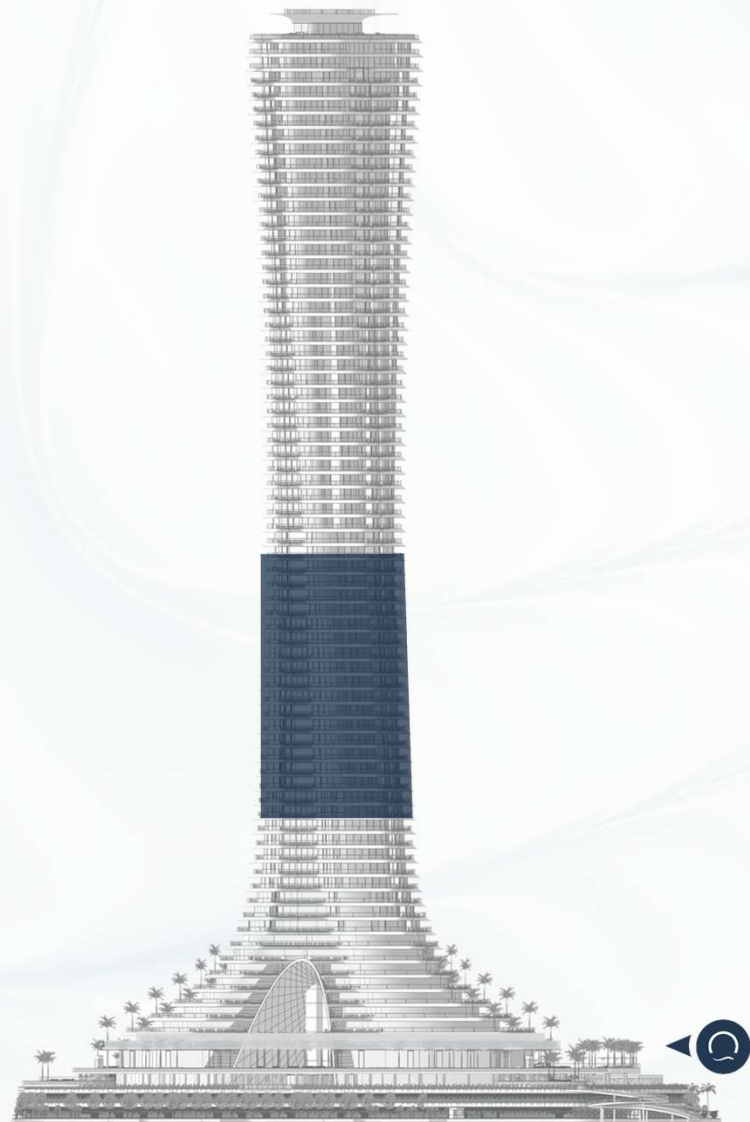
• RESIDENCES •

TOWER RESIDENCES

LEVELS 19 - 36

3 - 4 BEDROOMS

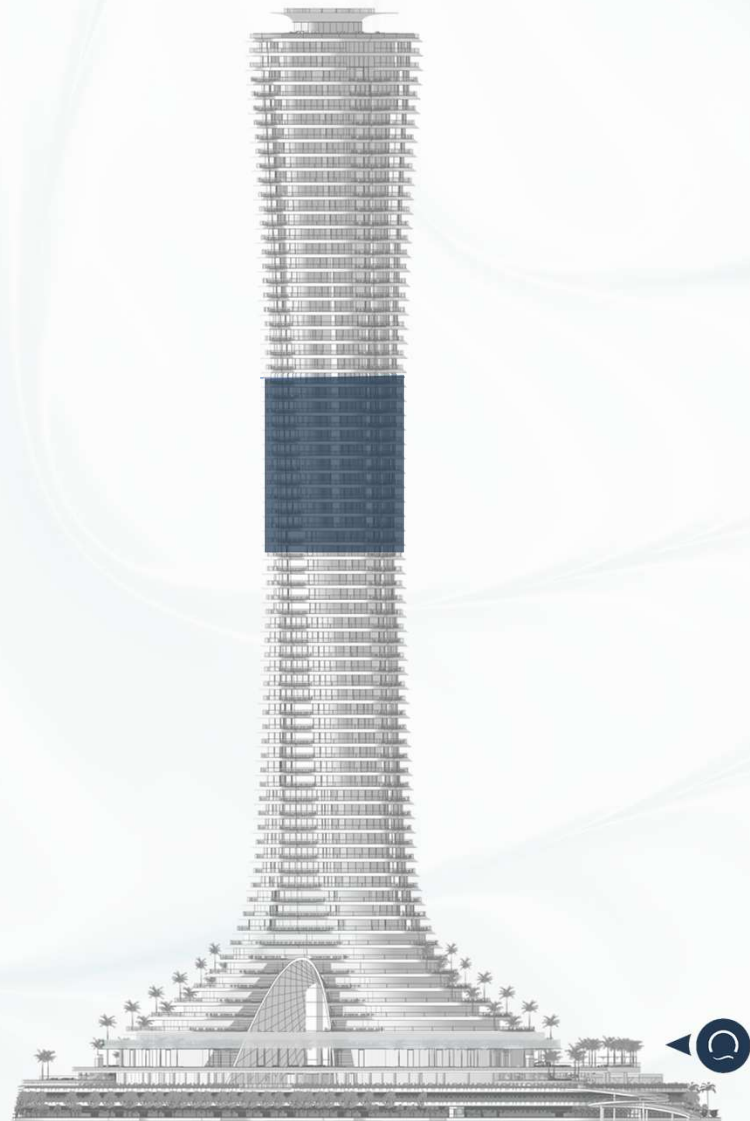
SIZE RANGE: 9,300 - 10,200 SQFT



COMO

• RESIDENCES •

TOWER RESIDENCES
LEVELS 37 - 49
4 BEDROOMS
SIZE RANGE: 9,300 – 9,500 SQFT



COMO

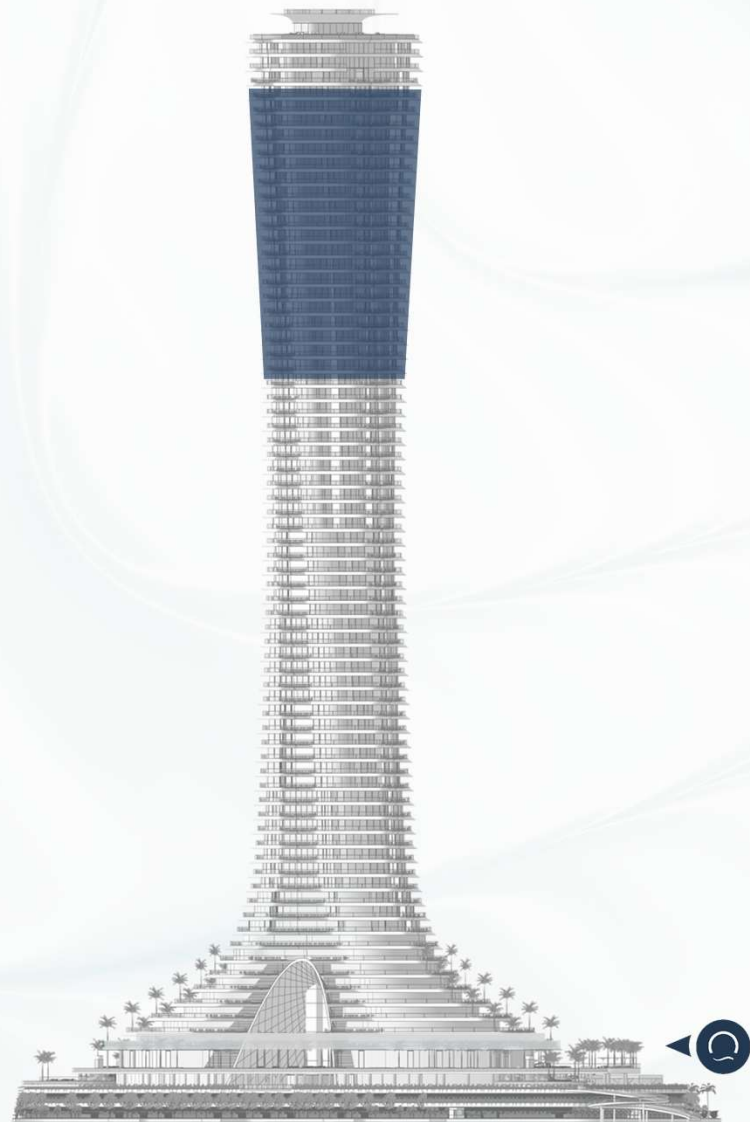
• RESIDENCES •

TOWER RESIDENCES

LEVELS 52- 67

4 – 5 BEDROOMS

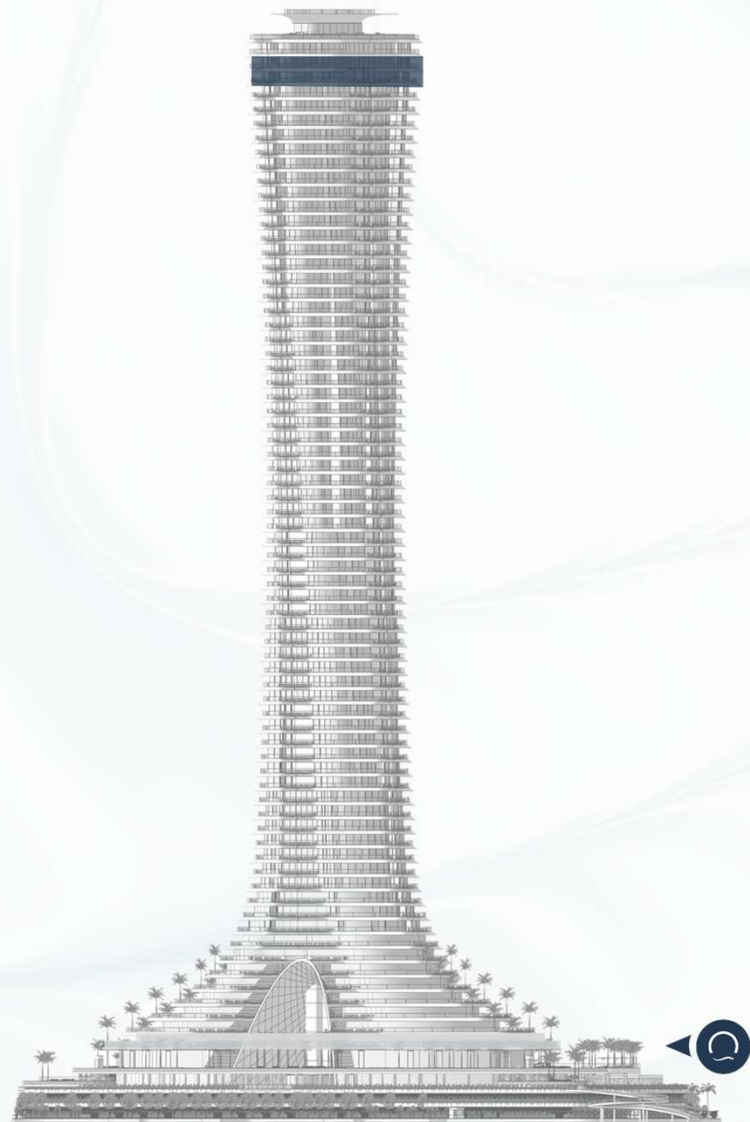
SIZE RANGE: 9,800 – 11,700 SQFT



COMO

• RESIDENCES •

PENTHOUSE RESIDENCE
LEVELS 68 - 69
5 BEDROOMS
SIZE RANGE: 22,000 SQFT





THANK YOU